

(DANRE) mylipb Antibody (C-term)
Purified Rabbit Polyclonal Antibody (Pab)
Catalog # Azb18718c

Specification

(DANRE) mylipb Antibody (C-term) - Product Information

Application	WB,E
Primary Accession	Q05AK5
Reactivity	Zebrafish
Host	Rabbit
Clonality	Polyclonal
Isotype	Rabbit IgG
Calculated MW	52661
Antigen Region	440-475

(DANRE) mylipb Antibody (C-term) - Additional Information

Gene ID 565911

Other Names

E3 ubiquitin-protein ligase MYLIP-B, 632-, Myosin regulatory light chain-interacting protein B, MIR-B, mylipb {ECO:0000312|ZFIN:ZDB-GENE-061027-67}

Target/Specificity

This DANRE mylipb antibody is generated from a rabbit immunized with a KLH conjugated synthetic peptide between 440-475 amino acids from the C-terminal region of DANRE mylipb.

Dilution

WB~~1:1000

E~~Use at an assay dependent concentration.

Format

Purified polyclonal antibody supplied in PBS with 0.09% (W/V) sodium azide. This antibody is purified through a protein A column, followed by peptide affinity purification.

Storage

Maintain refrigerated at 2-8°C for up to 2 weeks. For long term storage store at -20°C in small aliquots to prevent freeze-thaw cycles.

Precautions

(DANRE) mylipb Antibody (C-term) is for research use only and not for use in diagnostic or therapeutic procedures.

(DANRE) mylipb Antibody (C-term) - Protein Information

Name mylipb {ECO:0000312|ZFIN:ZDB-GENE-061027-67}

Function E3 ubiquitin-protein ligase that mediates ubiquitination and subsequent proteasomal

degradation of myosin regulatory light chain (MRLC). Regulates cell movements during gastrulation by acting downstream of fz7 to antagonize the frizzled-signaling pathway (By similarity).

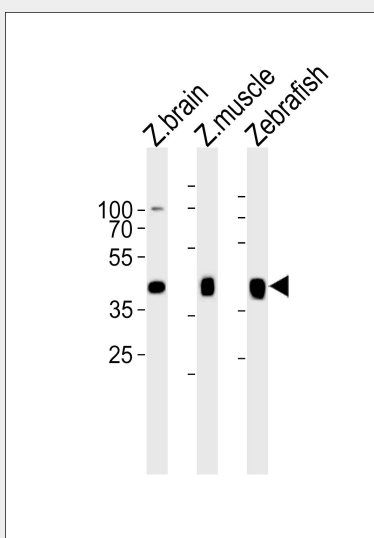
Cellular Location

Cytoplasm, cytosol {ECO:0000250|UniProtKB:Q6TEM9}

(DANRE) mylipb Antibody (C-term) - Protocols

Provided below are standard protocols that you may find useful for product applications.

- [Western Blot](#)
- [Blocking Peptides](#)
- [Dot Blot](#)
- [Immunohistochemistry](#)
- [Immunofluorescence](#)
- [Immunoprecipitation](#)
- [Flow Cytometry](#)
- [Cell Culture](#)

(DANRE) mylipb Antibody (C-term) - Images

Western blot analysis of lysates from zebra fish brain, zebra fish muscle, Zebrafish tissue lysate (from left to right), using (DANRE) mylipb Antibody (C-term)(Cat. #Azb18718c). Azb18718c was diluted at 1:1000 at each lane. A goat anti-rabbit IgG H&L(HRP) at 1:10000 dilution was used as the secondary antibody. Lysates at 35ug per lane.

(DANRE) mylipb Antibody (C-term) - Background

E3 ubiquitin-protein ligase that mediates ubiquitination and subsequent proteasomal degradation of myosin regulatory light chain (MRLC). Regulates cell movements during gastrulation by acting downstream of fz7 to antagonize the frizzled-signaling pathway (By similarity).